



Version: R7C 1.1 (12/2021)

## RGB Colorful LCD Screen Smart Thermostat

- ✓ The device supports Bluetooth ultra-speed distribution network, super convenient
- ✓ Programmable device, multiple periods allowed to set per day.
- ✓ 2.8 inches ultra-large colorful LCD screen, delicate visual effect.
- ✓ The device can be controlled by voice through Amazon Alexa and Google Assistant

### Parameter

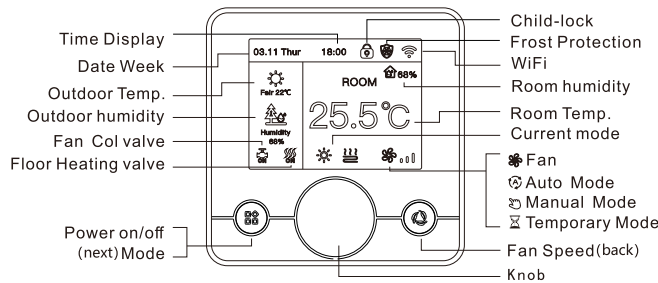
Supply voltage	AC100~240V; 50/60Hz
Power consumption	Wi-Fi 3W Max
Temp. setting range	5~95°C (41~203°F)
Floor limited range	20~90°C (68~194°F)
Temp. Dif.	0.5~10°C (1~10°F), Factory setting ±1°C
Ambient temperature	-5~50°C (68~122°F)
Protection level	IP20
Shell material	Anti-Flammable PC

### Product Overview

This series of thermostat has Floor Heating, Fan Coil, and Integrated version, meeting the requirements under different scenarios.

Version	System mode	Model	Application
Floor heating	Floor heating	716	Floor limit sensor + Weekly programming + 485Modbus(716S only)
		716S	
		703	ANC/NO dual-output + Weekly programming + 485Modbus(703S only)
Fan Coil	Heating /Cooling / Ventilation	723	Weekly programming+Potential-free output + 485Modbus(723S only)
		723S	
		743	Timer task + 2-pipe system
		853	Timer task + 2-pipe system + Potential-free output + limit sensor (optional) + Room card (optional) + 485Modbus(853S only)
		853S	
		863	Timer task + 4-pipe system + Potential-free output + limit sensor (optional) + Room card (optional) + 485Modbus(863S only)
Integrated	Heating / Cooling / Ventilation/Floor heating / Floor heating + Heating	963	Floor heating & fan coil, weekly programming + Potential-free output + Timer task + limit sensor (optional) + Room card (optional) + 485Modbus(963S only)
		963S	

### Display Symbols



### Temperature Control Mode(Floor Heating/Integrated)

#### Auto Mode

Weekly-circled programme, up to 6 heating events can be set per day. Heating events, workdays and temperature can be separately customized based on personal routines.

#### Manual Mode

Thermostat works based on manually-set temperature, disconnecting from auto mode.

#### Temporary Mode

Thermostat works based on manually-set temperature temporarily and then shifts back to auto mode till next event.

### User Operation

**Power on/off:** Press " " for 3 seconds to turn on/off the thermostat.

**Temp setting:** Rotate handwheel " " to change setting temperature by 0.5°C.

**System mode:** Press " " shortly to switch manual/auto mode. (Floor heating)

Press " " shortly to switch cooling/heating/ventilation. (Fan Coil)

Press " " shortly to switch cooling/heating/ventilation/floor heating/floor heating + heating. (Integrated)

**Enter menu:** Press " " enter the menu interface.

**Temp control mode:** Press " " shortly to switch manual/auto mode. (Integrated, floor heating)

**Child-lock:** Press " " + " " for 3 seconds to activate child-lock.

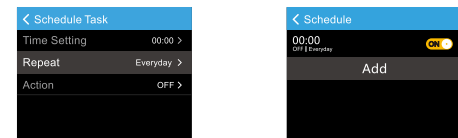
### Wi-Fi setting

Press " " for 3 seconds to enter the menu page. Turn the knob " ", choose "Wi-Fi setting", and then choose "Bluetooth Mode", press " " and confirm. The device enters the distribution network state.



### Timer Task Setting (Fan Coil/Integrated)

Under power-on status, long press menu button " " to enter the menu page, choose Auto Mode, then choose Schedule and set the parameters, press menu button " " to return to the previous page. Finally, press wind speed button " " to activate the timer switch function.



### Advanced Setting (Usually for Professional Technicians)

Under power-on status, long press menu button " " to enter the menu page, choose Engineer Mode and put in password 123456 to enter the advanced setting page. After setting the parameters, press menu button " " to save and exit.

function list	Handwheel " "	Default Value						
			Integrated	Fan Coil	Floor Heating	963	863	853
ModBus Address (optional)	Adjustment range 0~250	0	✓	✓	✓	✓	✓	✓
Sensor Calibration	-9.9~9.9°C (-9~9°F)	-3°C	✓	✓	✓	✓	✓	✓
Temp. Dif.	0.5~10°C (1~10°F)	±1°C	✓	✓	✓	✓	✓	✓
Max Setting Value	47~95°C (117~203°F)	50°C	✓	✓	✓	✓	✓	✓
Min Setting Value	5~47°C (41~117°F)	5°C	✓	✓	✓	✓	✓	✓
Anti-Freeze Protection	ON/OFF	OFF	✓	✓	✓	✓	✓	✓
Temperature Unit	C/F	°C	✓	✓	✓	✓	✓	✓
Sensor Mode	Built-in sensor Floor sensor Built-in Control & Floor Limitation	IN	✓	✓	✓	✓	✓	✓
Floor limited Value	20~90°C (68~194°F)	35°C	✓	✓	✓	✓	✓	✓
Weekday Mode	Monday to Friday Monday to Saturday Monday to Sunday	2-day	✓	✓	✓	✓	✓	✓
Linkage Time Delay	0~5min	0min	✓	✓	✓	✓	✓	✓
Child-lock Type	None Lock All All but power	None	✓	✓	✓	✓	✓	✓
Boot Type	Function Off Function On Function Saved	Last	✓	✓	✓	✓	✓	✓
Room card status	OFF Enter energy saving temperature Remove card shutdown	OFF	✓	✓	✓	✓	✓	✓
Room card heating ECO temp	10~21°C (50~69°F)	18°C	✓	✓	✓	✓	✓	✓
Room card cooling ECO temp	22~32°C (72~89°F)	26°C	✓	✓	✓	✓	✓	✓
Air-Condition Mode	All/Cold Ongly	All	✓	✓	✓	✓	✓	✓
Temp Control	Manual/Auto	Manual	✓	✓	✓	✓	✓	✓
Reset All Settings	Yes/No	/	✓	✓	✓	✓	✓	✓

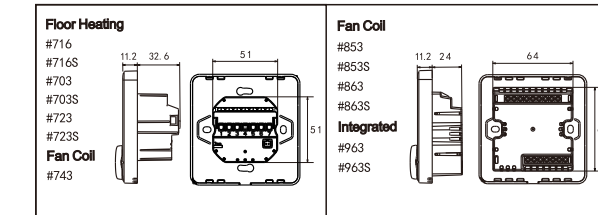
## RGB Colorful LCD Screen Smart Thermostat

### Auto-mode Setting (Fan Coil/ Integrated)

Under power-on status, long press menu button " " to enter the menu page, choose Auto Mode, then choose Weekly Programming and set the period parameters, press menu button " " to save and exit.

Events	Time		Temperature	
	Default value	Modify	Default value	Modify
Workdays	Sunrise	06:00	20°C	Rotate handwheel
	Morning	08:00	15°C	
	Nooning	11:30	15°C	
	Afternoon	12:30	15°C	
	Evening	17:00	22°C	
Weekends	Sunrise	08:00	20°C	Rotate handwheel
	Night	22:00	15°C	

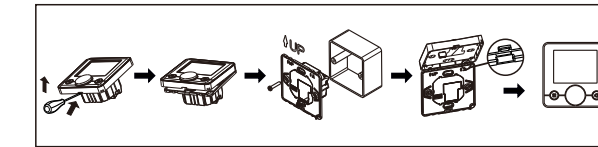
### Dimensions (Unit: mm)



### Mounting Steps

The thermostat adopt pre-guide and limited snap-fit design. It is easy to mount.

- 1) Release front cover by inserting a head screw-driver into bottom crack.
- 2) Insert the wires and then fix these wires with screws. Suggested wire-stripping length is 7-9mm.
- 3) Mount backing plate into wall-cassette, put screws and then fix thermostat. Make sure that the thermostat is fixed without deformation. Suggested torque is 0.2~0.4N.m (2.0~4.1kgf.cm).
- 4) Re-mount the front cover via snap-fit connection.

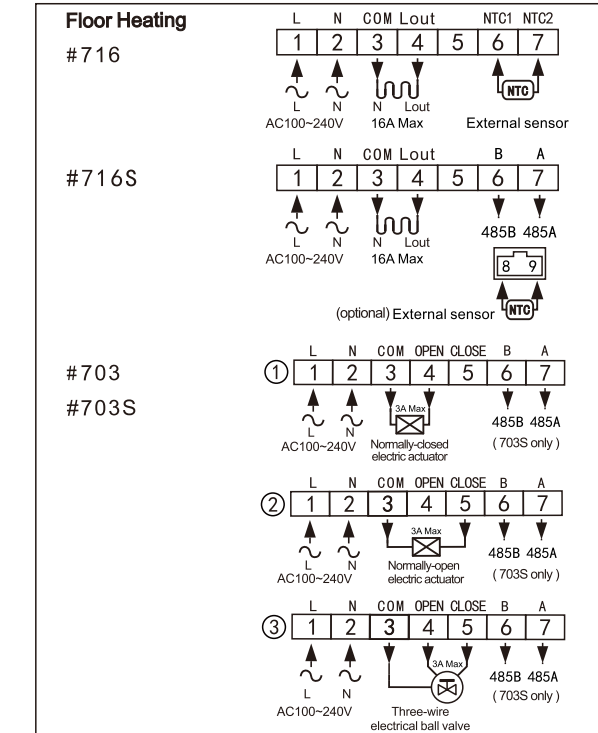


### Sensor failure

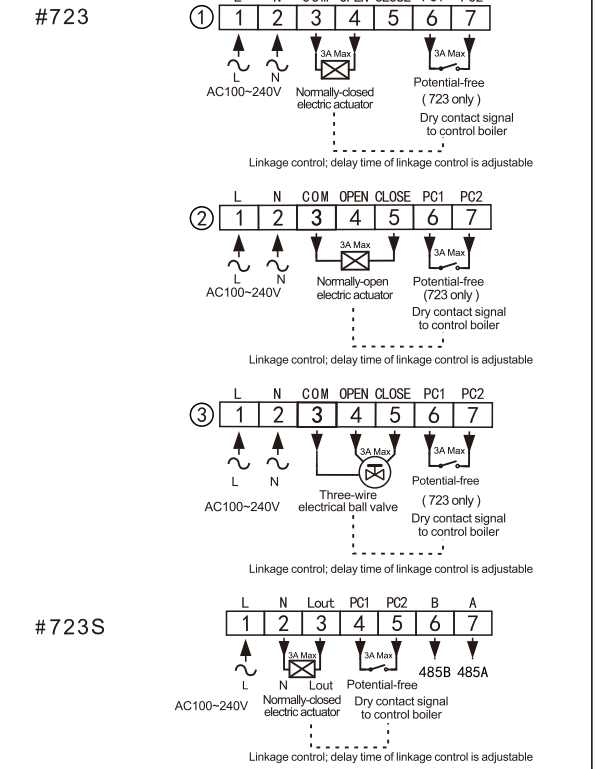
Please select work mode of sensors correctly. When it shows E0/E1 error, thermostat will stay power-off till the error is eliminated. E0: built-in sensor is short-circuited or disconnected. E1: floor sensor is short-circuited or disconnected.

### Connecting Diagram

The thermostat operates in full capacity in areas with the altitude of less than 2500 above sea level. Power rating of external load should be less than or equal to 80% rated power of the thermostat in areas with altitude of 2500m to 4200m.

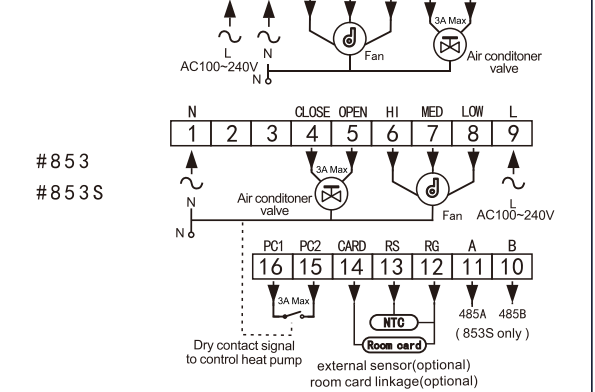


## Installation instructions



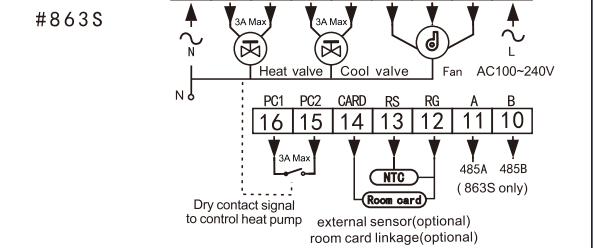
### Fan Coil

#743



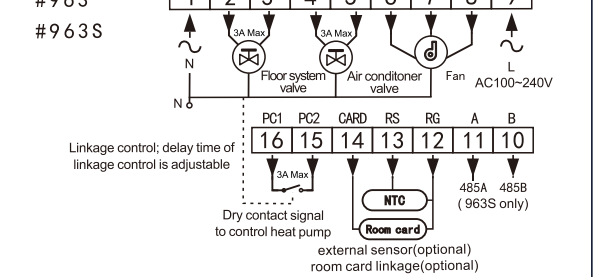
#853

#853S



#863

#863S



### Integrated

#963

#963S

