

Android Retail Tablets

10.1"LCD Screen



User Manual

Contents

Notes of Importance.....	2
Features.....	3
Package Contents.....	4
POE Connect.....	5
Android OS Home Screen.....	6
Install APP.....	7
Uninstall APP.....	8
Factory Reset.....	9
Specifications.....	10

Notes of Importance

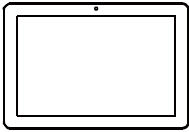
- 1) The equipment is for indoor use only.
- 2) To reduce the risk of fires or electric shock, do not expose the equipment to rain or moisture.
- 3) Do not block the ventilation holes on the back of equipment at any time.
- 4) Do not subject the equipment to severe shocking
- 5) Prevent any foreign matter falling into the external slot.
- 6) Do not open the case of the equipment. There is a risk of electric shock, and there are no user serviceable parts inside. Opening the case will void your warranty.

Features

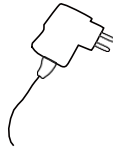
- ◆ 10.1" Screen,1280*800
- ◆ RK3288 Quad-core Cortex-A17 up to 1.8GHz
- ◆ Android 8.0/ 10 O/S
- ◆ Capacitive touch screen
- ◆ Wifi 802.11b/g/n
- ◆ Camera Front 2.0MP
- ◆ Bluetooth
- ◆ 2x USB 2.0 host
- ◆ 2*1W Speaker
- ◆ OTG x1 USB
- ◆ SD card slot

Package Contents

Please make sure all of the following are present when you unpack your Android Tablets.



Android Retail Tablets



Power adapter

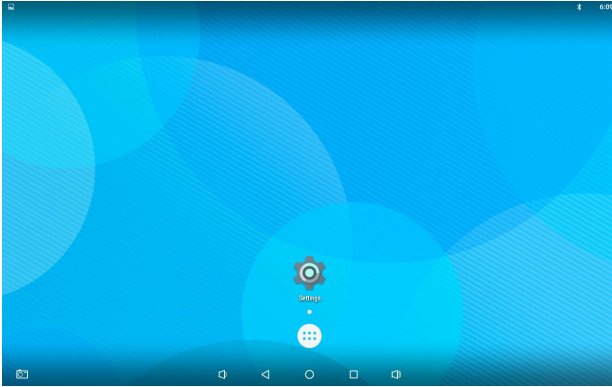



E-edition User manual

Android OS Home Screen

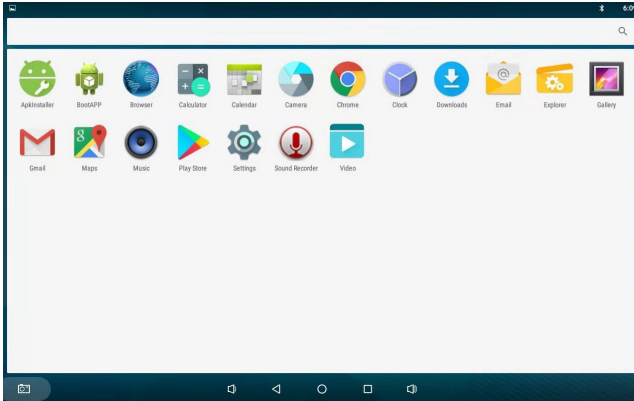
Insert the power lead into the DC socket, and then insert the other end into the power socket.

- 2)The equipment will automatically power on.
- 3)Screen will show the starting logo.
- 4)Wait for about 25 seconds and enter into main interface.




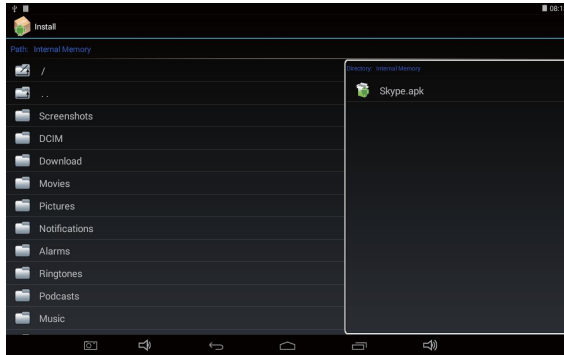
- 5) In the main interface, click  icon to go to APPS menu screen.
- 6)Click the apps icon to enter into apps click the “RETURN” icon, return to previous, page click the “HOME”icon return to the main interface.

Android OS Home Screen

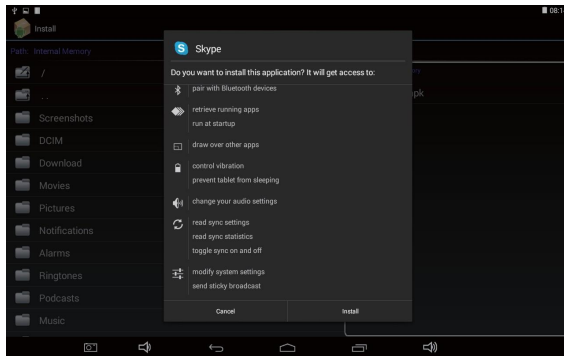


Install APP

- 1) Copy the file of APK format to your device or SD card.
- 2) Click the  that in APPS, then you will enter into the 'APK Installer', select 'install', as the following picture:



- 3) Click the APK which you want to install, as the following pictures:



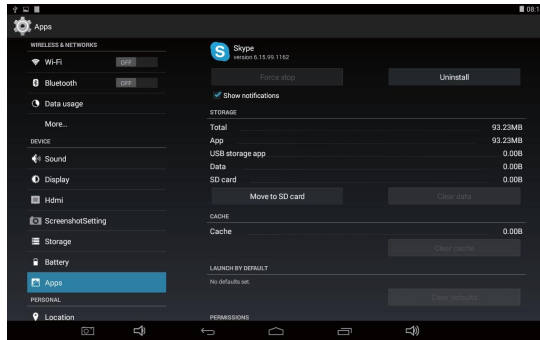
- 4) After installing the APK, you can click the APK icon in the apps to enjoy the application.

Uninstall APP

- 1) Click the 'settings' in the APPS, enter into 'settings'/'APPS'/'DOWNLOADED', select which application would you want to uninstall, as the following picture:



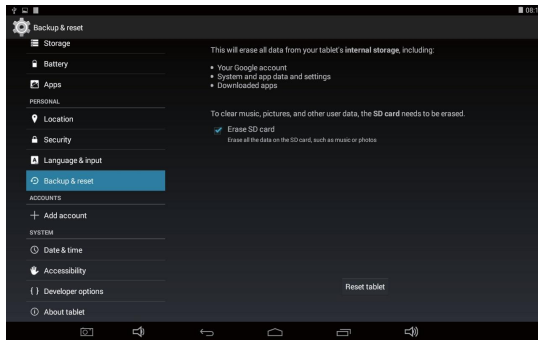
- 2) Select and click the Uninstall button to uninstall this application, as the following picture:



Factory Reset

If your device has been contracted the virus, or worked unexpectedly by installing third-party applications, then you can erase all data from your device via reset tablet.

Operation: click 'Settings' 'Backup & reset' 'factory data reset', then click the 'reset tablet' and 'erase everything', as the following picture:



Specifications

NO.	Item	SPEC
1	CPU	RK3566 Quad-core Cortex-A55 up to 1.8GHz
2	O/S	Android 11
3	DRAM	2GB
4	Memory	eMMC, 16GB
5	LCD	10.1
6	LCD Resolution	10.1" , 1280*800
7	Touch screen	Capacitive touch screen
8	WiFi	802.11b/g/n
9	Ethernet	10M/100M Ethernet
10	Bluetooth	Bluetooth 4.0
11	Camera	2.0M/P
12	Video format	MPEG1 ;MPEG2 ;MPEG4 ;4K UHD, H. 265, H. 264, RV, VC-1, VP8
13	Audio format	MP2, MP3, AAC etc.
14	DC input	DC 12V/2A input
15	SD card	Support SD card (Max 32G)
16	interfaces	USB hostx2; OTG RJ45; earphone ;DC;, SD card slot
17	VESA	75x75mm
18	POE	Support
19	Power consumption	20W (max)
20	Dimension	10.1" 260*180*25.5mm

Common Problems And Countermeasures

2. In the touch screen have no reaction when charging or automatically jump to the other interface

Solution: The connection is not the factory configuration chargers may cause bad touch, please use the factory configuration when charging.

3. After open the WIFI, not be able to connect to the router

Solution: May the WIFI password input error, please enter the password correctly.

4. Computer USB connection reaction

check whether the connecting line between the machine

Solution:

with a computer is connected, then click the machine upper left screen

5. In the abnormal operation after the crash, lag

Solution: Long press power key to 10 seconds to turn it off, and then restart is back to normal.